

TENT

comparison & options



TENT ALU

Aluminium frame

40 mm sleek aluminium hexagonal tubes

Wheeled transporter bag

Locking clips at legs of frame for set-up

Higher pricing

Sizes and weights:

3 x 3 m → 20 kg

3 x 4,5 m → 25,4 kg

3 x 6 m → 32,4 kg

Graphic is B1 certified



TENT STEEL

Steel frame

30 mm white-coated rounded square tubes

Carry-on bag

Large and easy push buttons for quick set-up

Budget-friendly pricing

Sizes and weights:

3 x 3 m → 21,8 kg

3 x 4,5 m → 22,9 kg

Graphic is B1 certified



Options



Tent with canopy



Tent with canopy and half wall



Tent with canopy and full wall

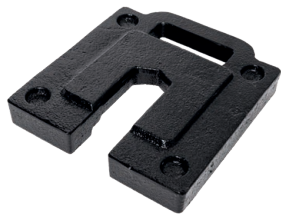


Tent with canopy and multiple walls

TENT

comparison & options

Accessories



Steel Plate 5 KG



Sand Bag



Flag Holder Set



Connector

Suitable for every occasion

Tents are suitable for any occasion. Draw attention, spark interests, claim the location and advertise with an impressive tent!

- Weather resistible signage
- Easy and quick set-up
- Portable outdoor products, so you can easily take them from event to event

OPEN DAY



SPORT EVENTS



CAMPAIGNS & PROMOTIONS

